

**MICROTEX ELECTRONICS, INC.**

2929 N. CENTRAL EXPY, SUITE 250

RICHARDSON, TX 75080

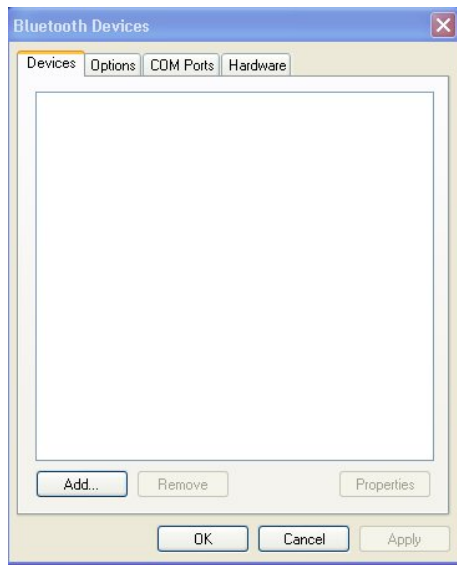
TEL: (972) 479-1011

FAX: (972) 479-1015

# AP104

## FR2B Bluetooth Installation:

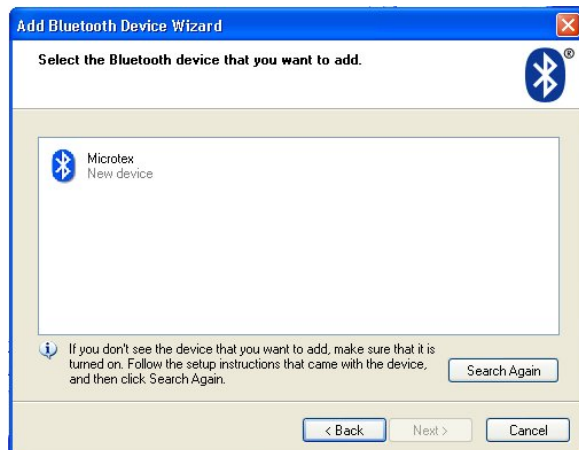
Thanks for purchasing the FR2B Bluetooth Optical probe. This device needs a full charge before use. After charging, install your bluetooth device by “locking in” the Bluetooth passcode. This depends on your hardware in your Handheld or Laptop Computer.



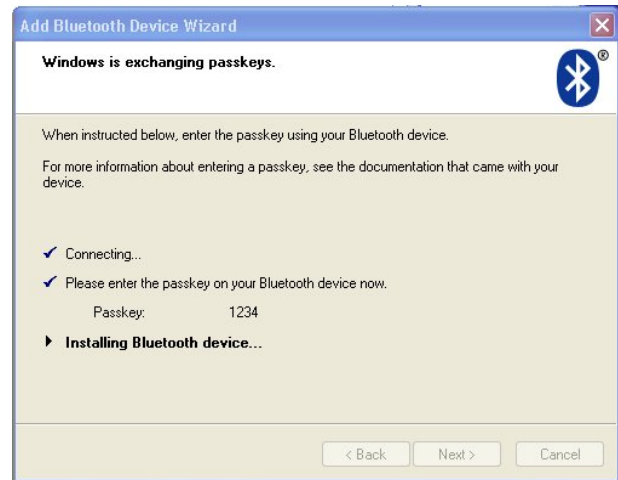
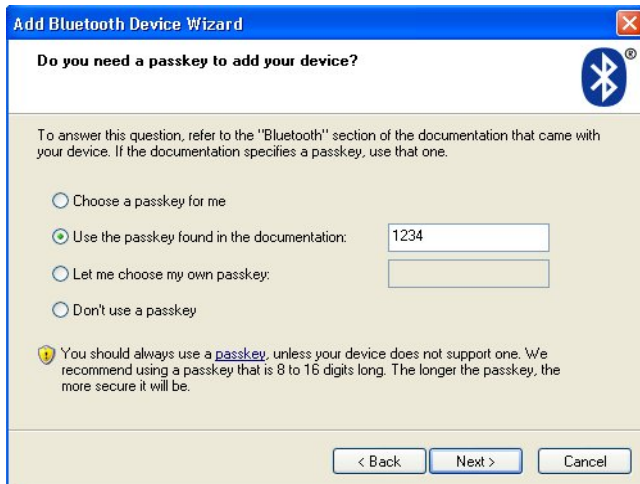
1.) Go to “Add” bluetooth Device.



2.) Check device is setup and waiting to be Found and place the FR2B unit on a meter.



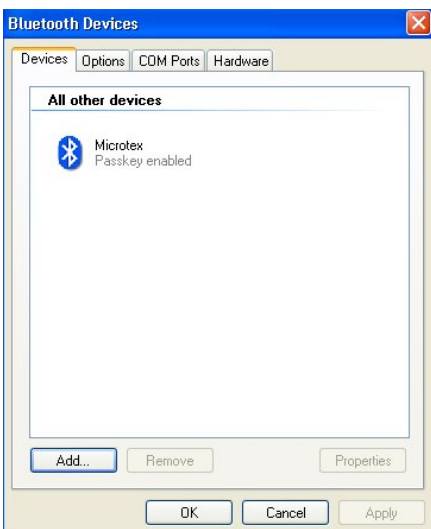
3.) Your software should find a working FR2B Microtex Unit. Make sure the FR2B is on a meter.



4.) Enter Passcode “1234” for the FR2B Unit. Windows Should exchange passkeys.



5.) Windows will install the device on a COM port. Use the “Outgoing” COM Port



5.) Press “OK” Device is installed. Use your software On the “Outgoing” COM PORT. You are finished! Use Your meter software as normal. YOU may change your COM port in device manager if you wish.