



FR2/3-USB Driver Installation

This application note covers the installation procedure for the FR2 and FR3 USB Probe drivers. All steps must be done correctly for the proper operation of the probes with the USB interface. This is a three step process to install the Bus Driver, the Port Driver and the Converter Driver.

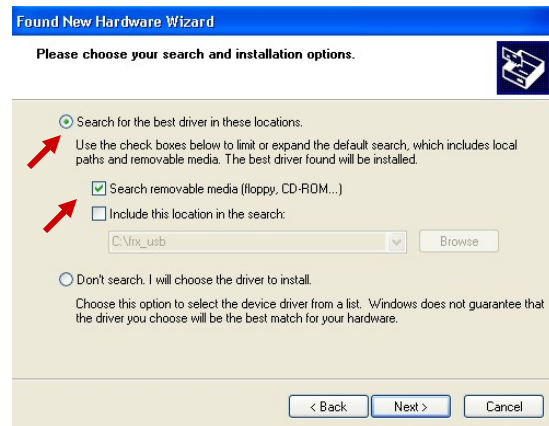
(NOTE: *Never select the Install the software automatically option during installation. This will cause the driver installation to fail*)

1) Initialization

Plug the FRx-USB Optical Probe into the windows based PC. The PC will recognize the probe and look for a driver to install. An icon with the FRx-USB probe should appear on the bottom right corner of the screen.

2) Select the Device Bus Driver

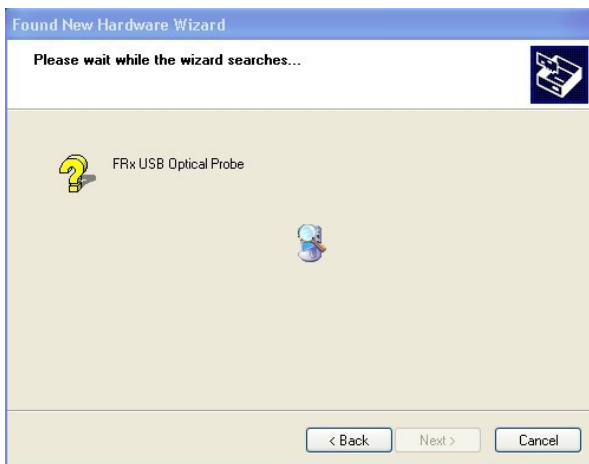
Windows will try to install a driver. (*DO NOT let windows install it's own driver.*) On the first dialog box click on “Install from a list or specific location (Advanced)” then click on Next. When the next dialog box comes up select “Search for the best in these locations “ and direct windows to search the floppy (Removable media) for the FRx-USB probe driver then click on NEXT .





3) Verify Selection

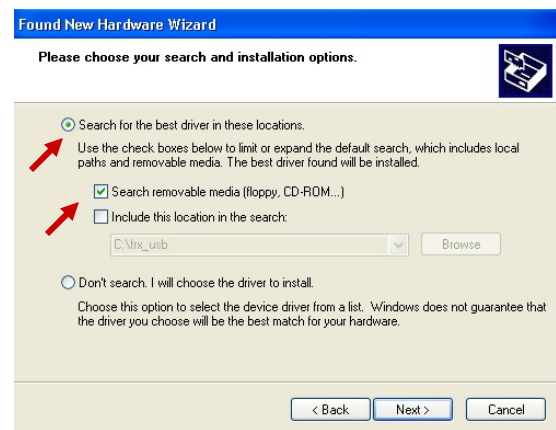
Windows will search for the driver. When the driver is found Windows will complain that it is not a Windows approved driver. Select “Continue Anyway“ and Windows will load the driver from the floppy. When the new driver is installed click on “Finish” to complete this step of the installation.





4) Select the Port Driver

After the Bus driver is installed, Windows will again recognize that the device is a port simulator and a new dialog box will appear. *(DO NOT let windows install it's own driver.)* On the this dialog box click on “Install from a list or specific location (Advanced)” then click on Next. When the next dialog box comes up select “Search for the best in these locations “ and direct windows to search the floppy (Removable media) for the **FRx-USB** probe driver then click on NEXT.



5) Verify Selection

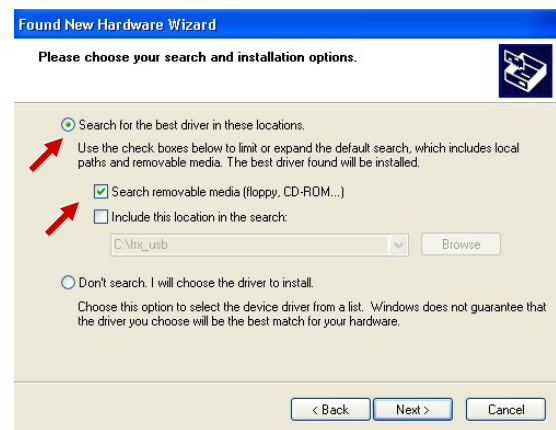
Windows will search for the driver. When the driver is found Windows will complain that it is not a Windows approved driver. Select “Continue Anyway“ and Windows will load the driver from the floppy. When the new driver is installed click on “Finish” to complete this step of the installation.





6) Select the Converter Driver

After the Port driver is installed, Windows will again recognize that the device is a port simulator and a new dialog box will appear. (**DO NOT** let windows install it's own driver.) On the this dialog box click on “**Install from a list or specific location (Advanced)**” then click on **Next**. When the next dialog box comes up select “**Search for the best in these locations** “ and direct windows to search the floppy (Removable media) for the **FRx-USB** probe driver then click on **NEXT**.



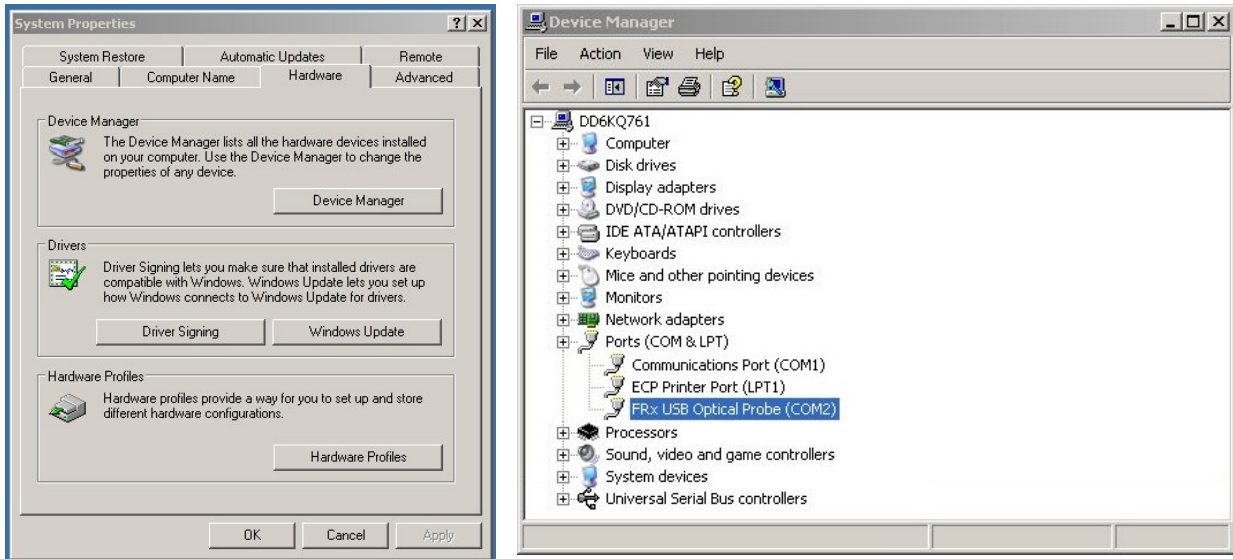
7) Verify Selection

Windows will search for the driver. When the driver is found Windows will complain that it is not a Windows approved driver. Select “**Continue Anyway**“ and Windows will load the driver from the floppy. When the new driver is installed click on “**Finish**” to complete this step of the installation.

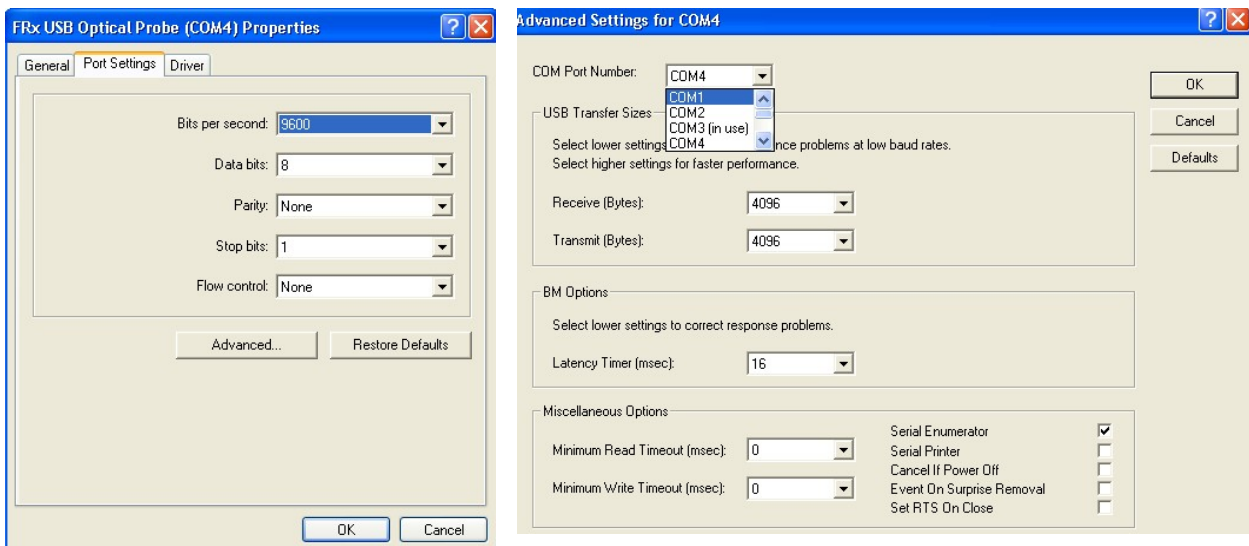


8) Select the Com Port Settings

Windows will install the probe on COM 1-256 Automatically (*We have no control over this.*) After installation Right Click on on the My Computer icon and select “Properties “. Select the Hardware tab and click on “Device Manager”. Under Ports (COM & LPT) select FRx USB Optical Probe.



Under the Ports Settings tab, click on the Advanced button. At this point you can set the COM Port as needed for your meter reading software. No other settings need to be changed from the default.



Make sure to REBOOT the PC after making these changes. Windows does not activate these changes until the machine is rebooted.



9) Operating The Probe

The software should now operate with the FR2/3-USB probe. The FR2/3 is a hot swap probe. (*Just plugging it in will automatically activate the driver.*)



Microtex Electronics, Inc.

2929 N. Central Expy. , Suite 250
Richardson, TX 75082
Tel: (972) 479-1011
Fax: (972) 479-1015

AP 102

01 - 06 - 2005

Page 7
