

**MICROTEX ELECTRONICS, INC.**

201 E. ARAPAHO, SUITE 200

RICHARDSON, TX 75082

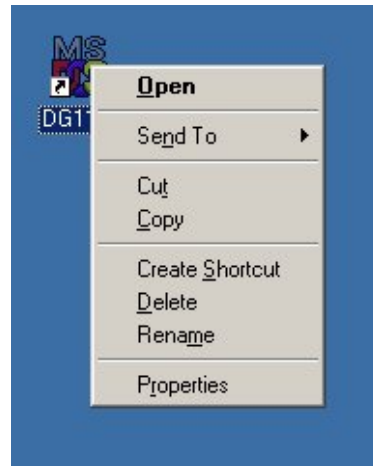
TEL: (972) 479-1011

FAX: (972) 479-1015

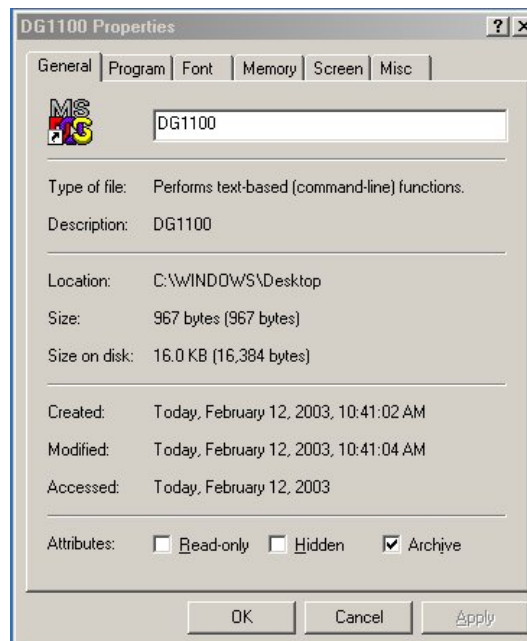
# AP100

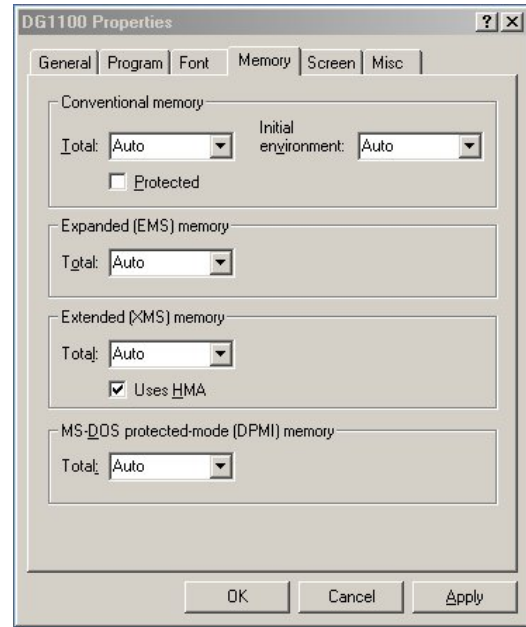
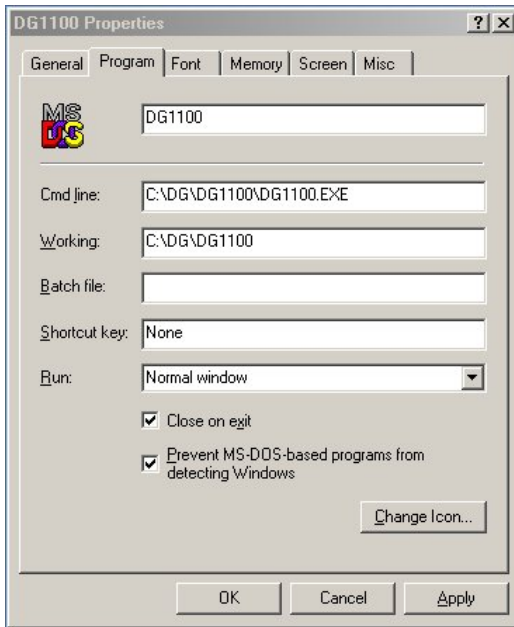
## GETTING DOS PROGRAMS TO WORK UNDER WINDOWS

**STEP 1: LOCATE DOS PROGRAM ICON  
AN RIGHT CLICK. PRESS "PROPERTIES"  
TAB AT THE BOTTOM OF THE  
SELECTIONS.**

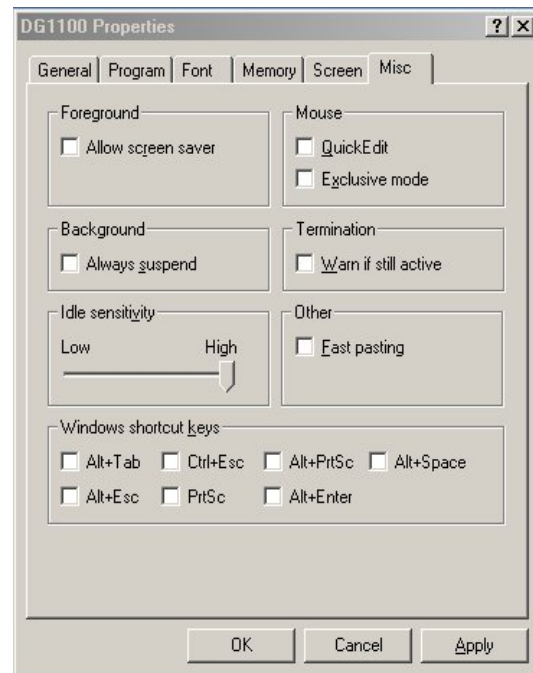
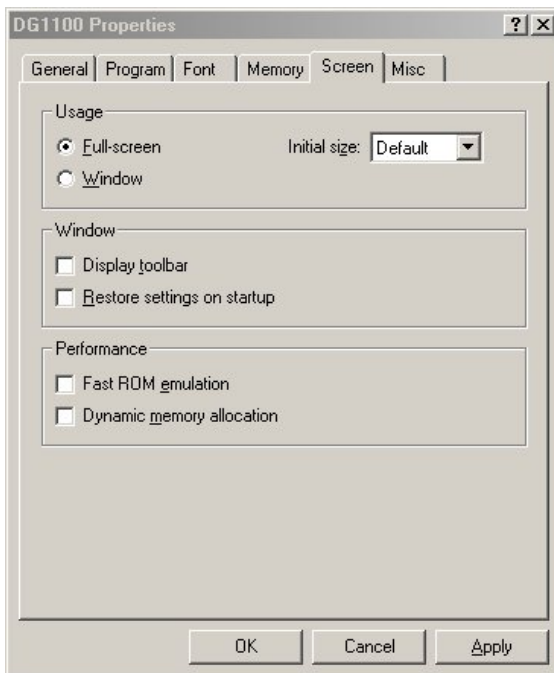


**STEP 2: THE DOS  
PROPERTIES BOX  
SHOULD LOOK LIKE THIS:  
THIS IS WHERE YOU CAN  
TURN OFF BACKGROUND  
WINDOWS FUNCTIONS  
THAT AFFECT THE DOS  
PROGRAM.**





**STEP 3: UNDER “PROGRAMS” TAB, CHECK CLOSE ON EXIT AND PREVENT MS-DOS PROGRAMS FROM DETECTING WINDOWS. IN WINDOWS 98 THERE IS AN “ADVANCED” TAB TO SELECT THE SAME. THE “MEMORY” TAB HAS EVERYTHING AUTO AND PROTECTED UNCHECKED.**



**STEP 4: UNDER “SCREEN” TAB CHECK FULL-SCREEN AND UNCHECK ALL WINDOWS FUNCTIONS. UNDER “MISC” TAB, UNCHECK EVERYTHING AND SET IDLE SENSITIVITY TO HIGH. PRESS “APPLY” AND “OK” AND YOU ARE DONE. RE-RUN PROGRAM.**